

General Specifications:

Total Fixture Output: 9.2 klm

Light Engine Output: 31.5 klm

Efficacy: 16 Lumen/Watt

Lens Option: N/A

Zoomrange: 12-48°

CRI: 90+

CQS: 90+

TM-30 Rf: 90+

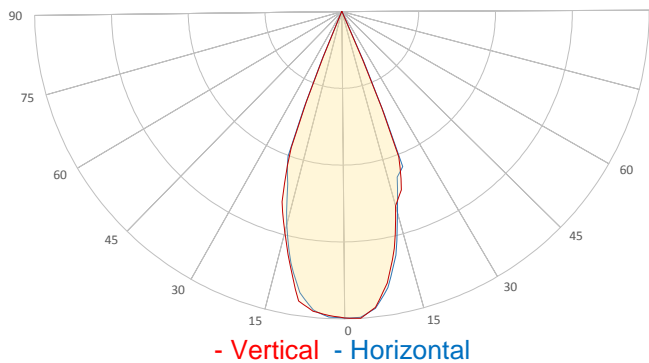
TM-30 Rg: 98+

TLCI: 90+

Color Temperature: 3000 K



Measurement



Catalog Number: 90234015

Measured Output: 9141 lm

Measured Peak: 27170 cd

Consumed Power: 582 W

Efficacy: 15.7 Lumen/Watt

Beam Angle (50%): 41.9°

Field Angle (10%): 46.8°

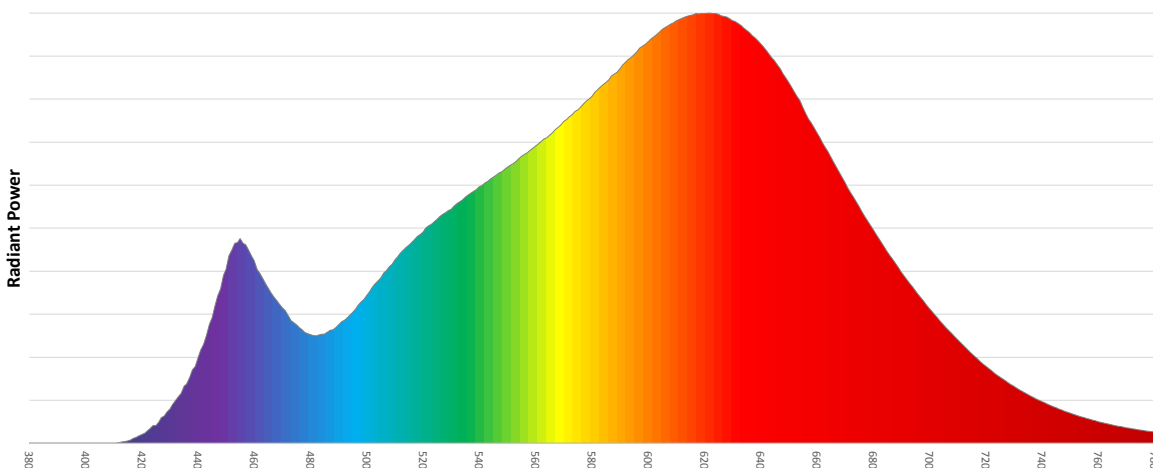
Cutoff Angle (3%): 47.7°

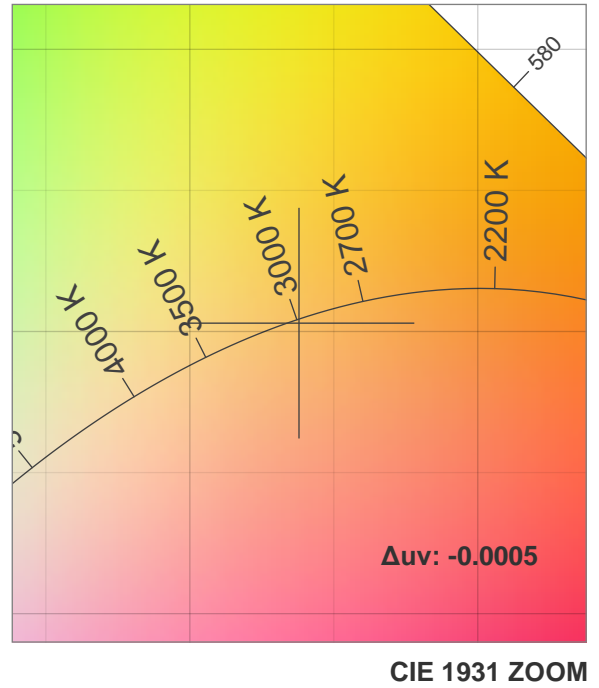
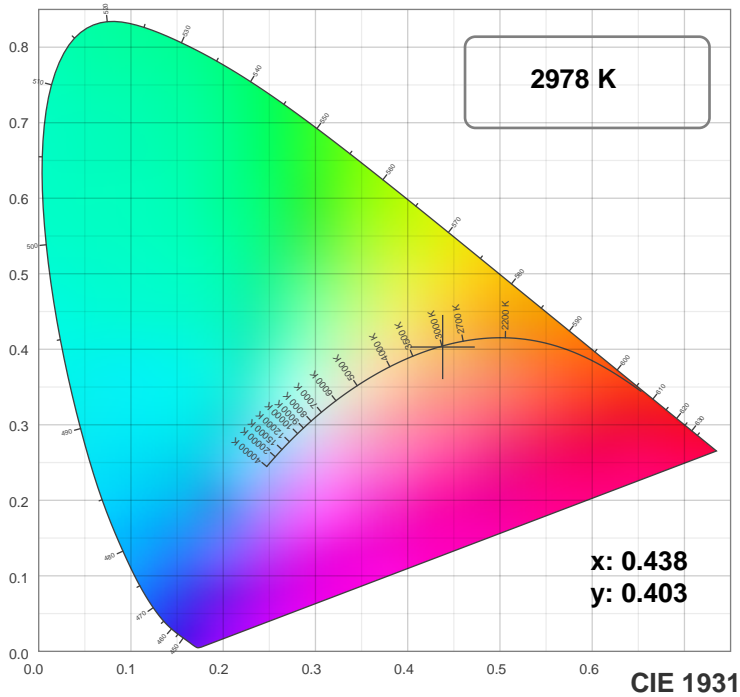
Measurement Condition:

Ambient Temperature: 25 +/- 5C

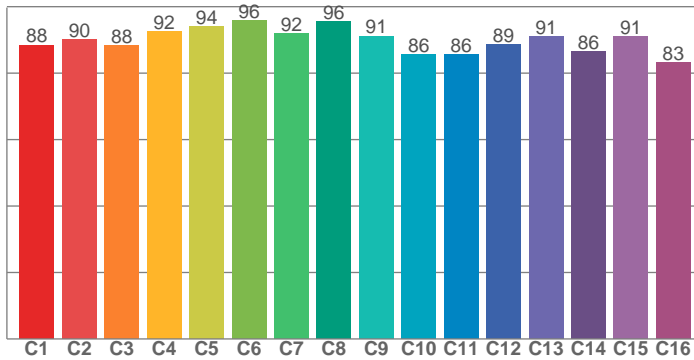
AC Supply: 230V/50Hz

Spectral distribution

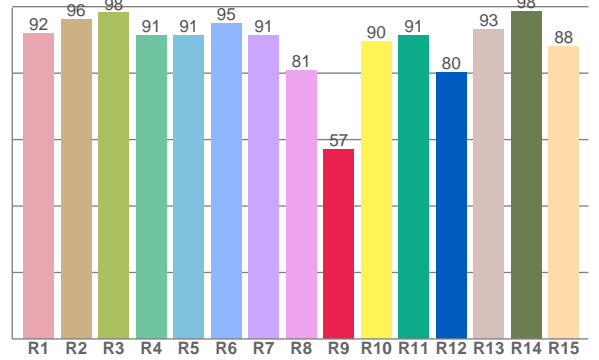




TM30: 89.8



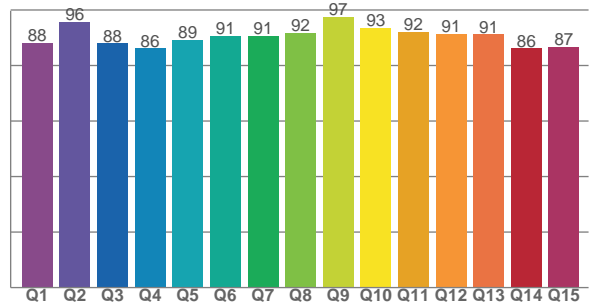
CRI: 92.0 (R1-R8)



Color Parameters

Color Temperature	Color Rendering Index	Red Component	Color Fidelity	Color Gamut
CCT	CRI	CRI R9	TM30 Rf	TM30 Rg
2978 K	92.0	56.9	89.8	98.3

CQS: 89.9



Television Lighting Consistency Index	Color Quality Scale	Color Coordinate CIE 1931	Color Coordinate CIE 1931	Color Coordinate CIE 1964	Color Coordinate CIE 1964	Color Diviation from Black Body
TLCI	CQS	x	y	u	v	Δuv
90+	89.9	0.438	0.403	0.252	0.347	-0.0005

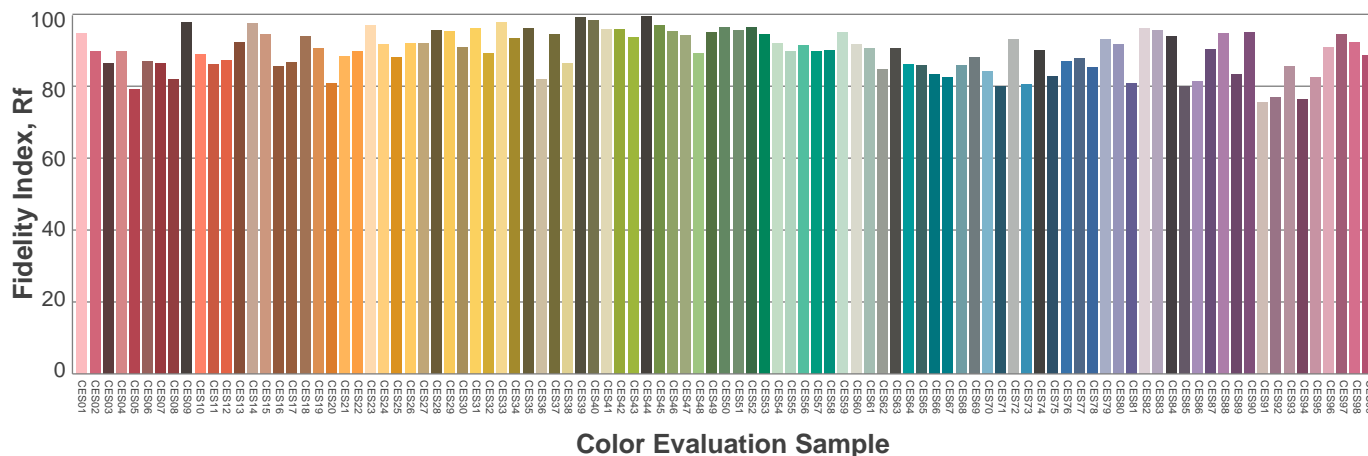
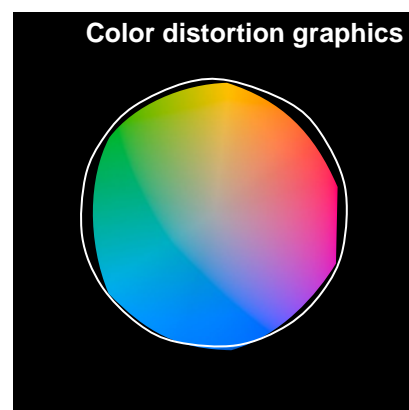
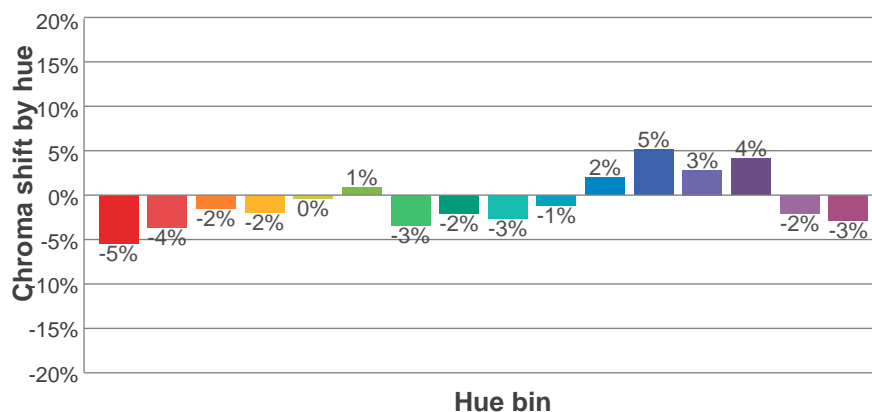
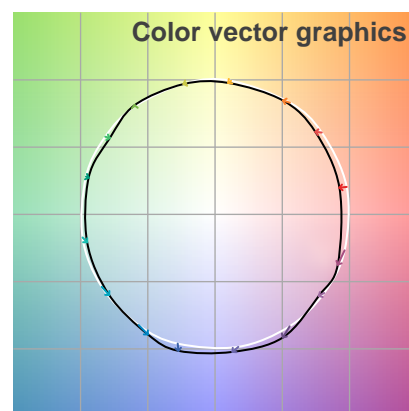
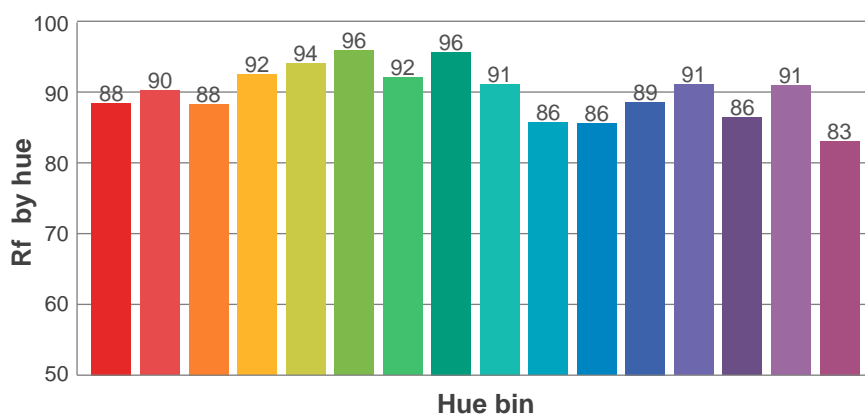
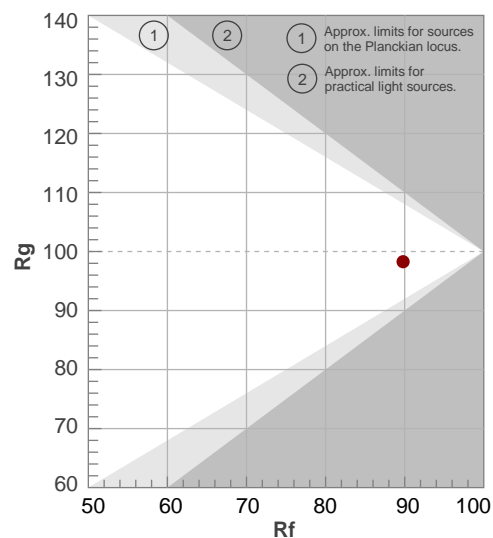
Rf 89.8

Fidelity index Rf

Rg 98.3

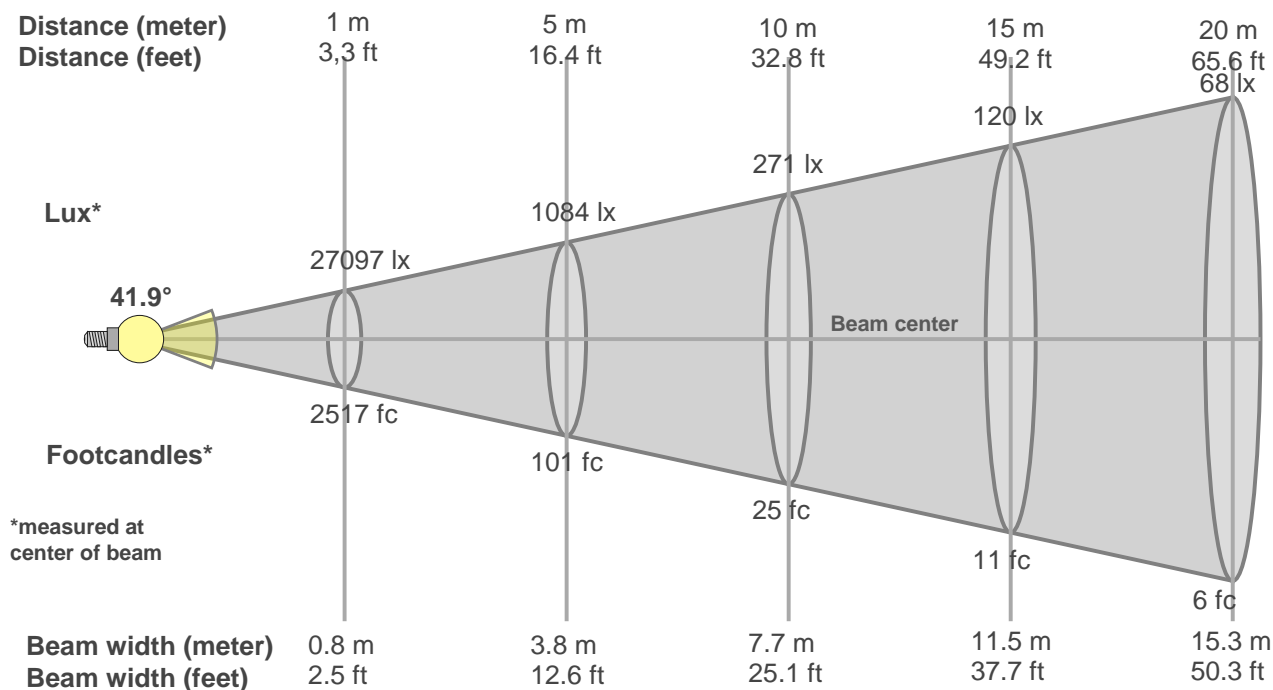
Gamut index Rg

Hue Bin	R _f	Graphic shifts (%)	
		Chroma	Hue
1	88	-5%	0%
2	90	-4%	3%
3	88	-2%	5%
4	92	-2%	2%
5	94	0%	2%
6	96	1%	0%
7	92	-3%	-1%
8	96	-2%	0%
9	91	-3%	4%
10	86	-1%	8%
11	86	2%	10%
12	89	5%	2%
13	91	3%	-5%
14	86	4%	-9%
15	91	-2%	-4%
16	83	-3%	-11%



Beam Details

MAC Encore Performance WRM – Wide



Beam width:

Beam luminous intensity formula:

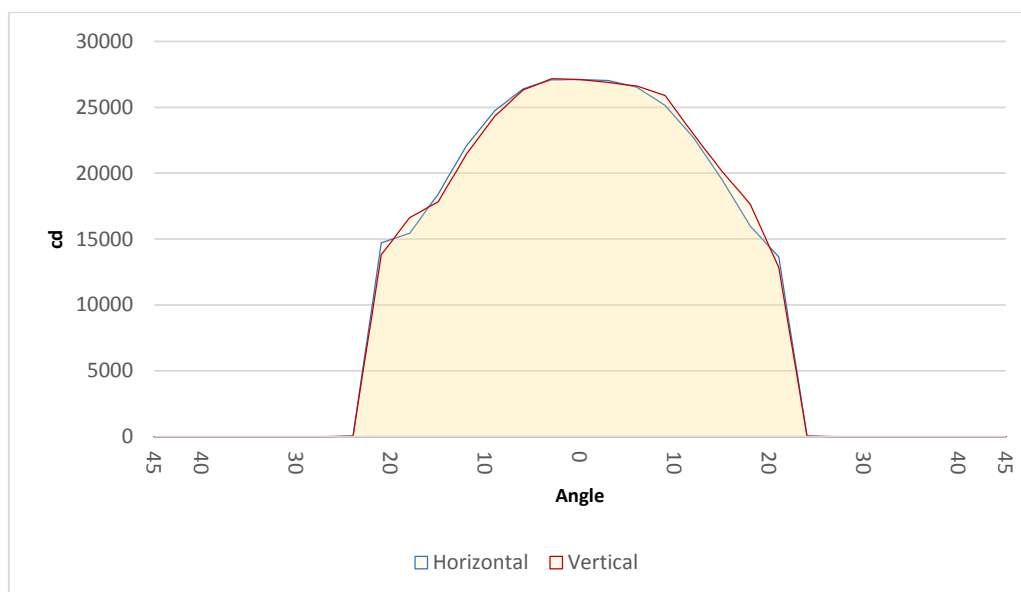
$$w = 0.8 * \text{distance}$$

$$\text{lux} = 27097 / (\text{distance}^2) \text{ (where distance is in meters)}$$

$$\text{fc} = 27097 / (\text{distance}^2) \text{ (where distance is in feet)}$$

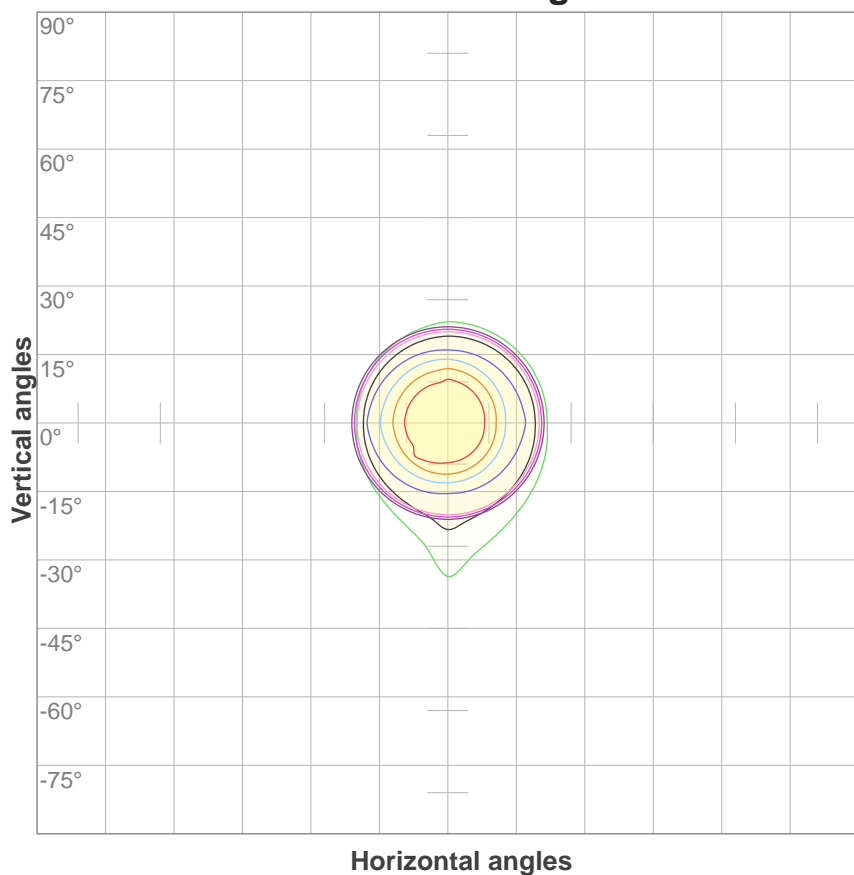
Beam illuminance from 1-20m

1m	2m	3m	4m	5m	6m	7m	8m	9m	10m	11m	12m	13m	14m	15m	16m	17m	18m	19m	20m
3.3ft	6.6ft	9.8ft	13.1ft	16.4ft	19.7ft	23ft	26.2ft	29.5ft	32.8ft	36.1ft	39.4ft	42.7ft	45.9ft	49.2ft	52.5ft	55.8ft	59.1ft	62.3ft	65.6ft
27097lx	6774lx	3011lx	1694lx	1084lx	753lx	553lx	423lx	335lx	271lx	224lx	188lx	160lx	138lx	120lx	106lx	94lx	84lx	75lx	68lx
2517.4fc	629.3fc	279.7fc	157.3fc	100.7fc	69.9fc	51.4fc	39.3fc	31.1fc	25.2fc	20.8fc	17.5fc	14.9fc	12.8fc	11.2fc	9.8fc	8.7fc	7.8fc	7fc	6.3fc



Beam angle 50%	Field angle 10%	Cutoff angle 3%
41.9°	46.8°	47.7°

ISO candela diagram



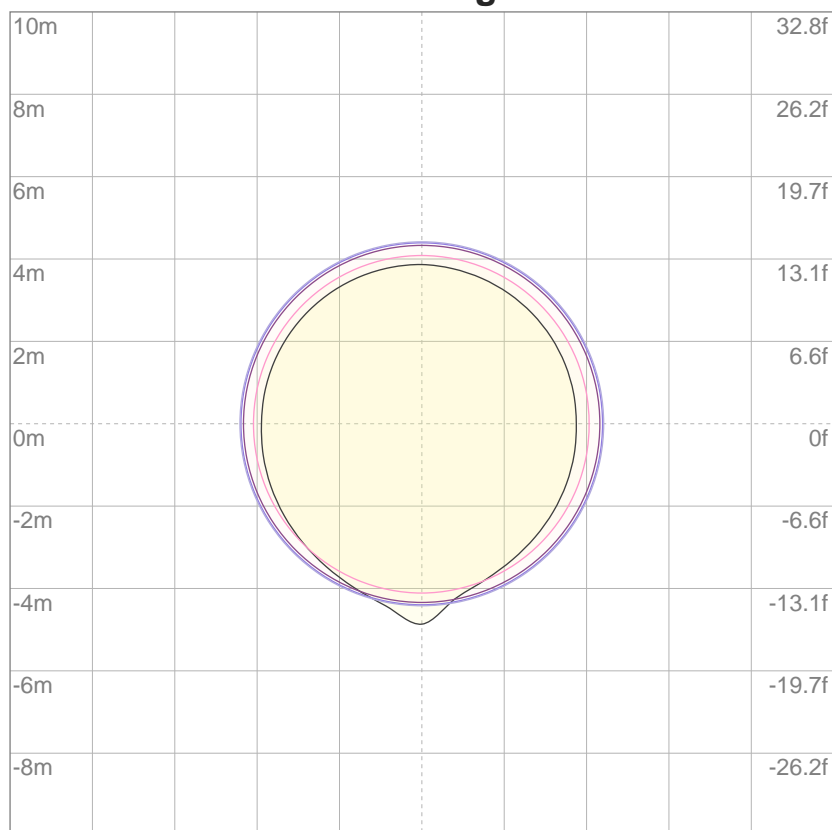
10%	2710 cd
20%	5419 cd
30%	8129 cd
40%	10839 cd
50%	13548 cd
60%	16258 cd
70%	18968 cd
80%	21678 cd
90%	24387 cd

Conditions:

Number of c-planes: 4

Candela at center: 27097 cd

ISO lux diagram



3%	8.13 lx
5%	13.5 lx
10%	27.1 lx
30%	81.3 lx
50%	135 lx

Conditions:

Number of c-planes: 4

Lux at center: 271 lx

Lux distribution on a surface when lamp is mounted at 10 meters from the surface.

Throw Distance: 10 meters (33 feet)